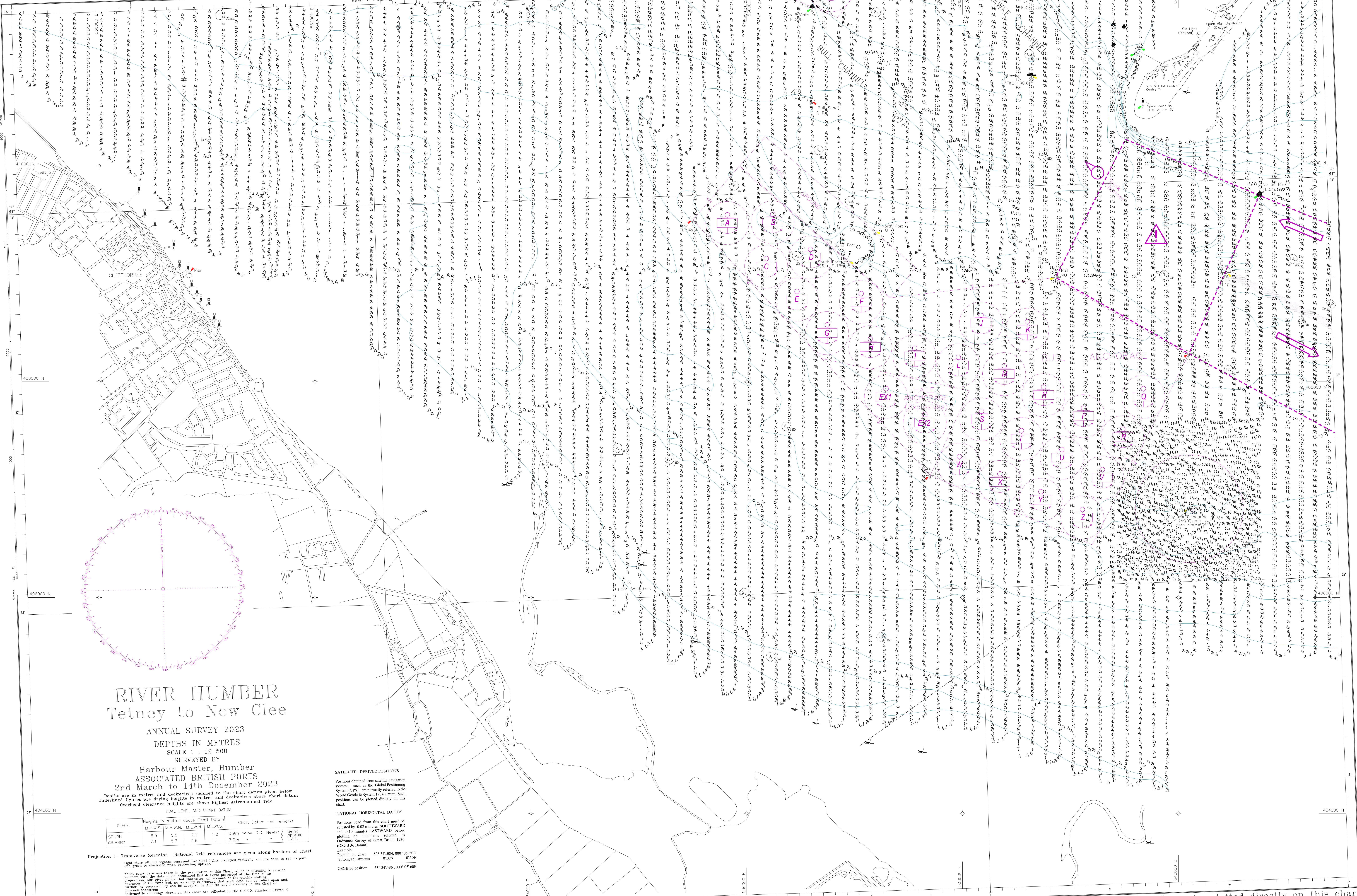


WGS 84 POSITIONS can be plotted directly on this chart



RIVER HUMBER Tetney to New Clee

ANNUAL SURVEY 2023
 DEPTHS IN METRES
 SCALE 1 : 12 500
 SURVEYED BY
 Harbour Master, Humber
 ASSOCIATED BRITISH PORTS
 2nd March to 14th December 2023

Depths are in metres and decimetres reduced to the chart datum given below
 Underlined figures are drying heights in metres and decimetres above chart datum
 Overhead clearance heights are above Highest Astronomical Tide

PLACE	Heights in metres above Chart Datum				Chart Datum and remarks
	M.H.W.S.	M.H.W.N.	M.L.W.N.	M.L.W.S.	
SPURN	6.9	5.5	2.7	1.2	3.9m below O.D. Newlyn } Being } approx. } L.A.T.
GRIMSBY	7.1	5.7	2.6	1.1	3.9m

Projection :- Transverse Mercator. National Grid references are given along borders of chart.
 Light stars without legends represent two fixed lights displayed vertically and are seen as red to port
 and green to starboard when proceeding seaward.

Notes every care was taken in the preparation of this Chart, which is intended to provide
 Mariners with the data which associated British Ports approved at the time of its
 preparation. It does not guarantee that the data is correct, and it is the user's
 responsibility to check the data against other sources. The Admiralty and the
 Hydrographic Office accept no responsibility for any loss or damage arising from the
 use of this Chart.

SATELLITE-DERIVED POSITIONS
 Positions obtained from satellite navigation
 systems, such as the Global Positioning
 System (GPS), are normally referred to the
 World Geodetic System 1984 Datum. Such
 positions can be plotted directly on this
 chart.

NATIONAL HORIZONTAL DATUM
 Positions read from this chart must be
 adjusted by 0.02 minutes SOUTHWARD
 and 0.10 minutes EASTWARD before
 plotting on documents referred to
 Ordnance Survey of Great Britain 1956
 (OSGB 36 Datum).
 Position on chart
 lat/long adjustment
 OSGB 36 position 53° 34' 48.000" 007° 05' 40.000"

WGS 84 POSITIONS can be plotted directly on this chart